



£2,500 PCM
Fishponds Road

Hitchin, SG5 1NR

PROPERTY SUMMARY

This spacious, detached Victorian home is centrally located within easy reach of the main line railway station and town centre amenities. Arranged over three floors, the accommodation has been freshly updated with new bathrooms, carpeting and decor. Full of character, the accommodation briefly comprises: Three reception rooms, kitchen, utility room, cloakroom, cellar, six bedrooms, two en-suites and two bathrooms. Outside, electric gates to the side driveway give access to parking and the rear garden.

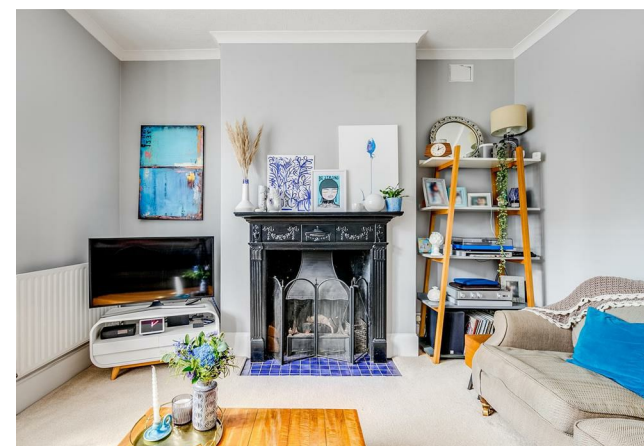
6



4



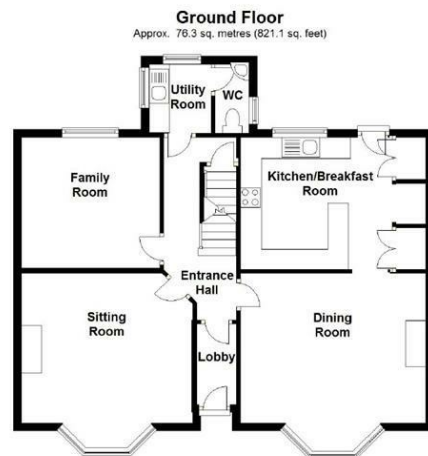
3



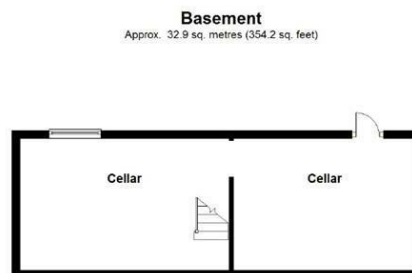
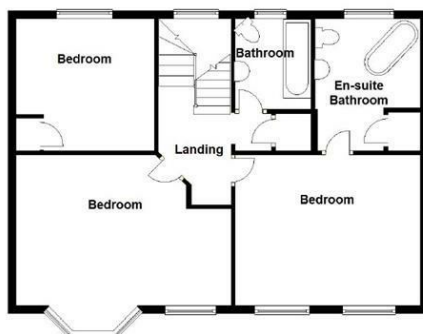




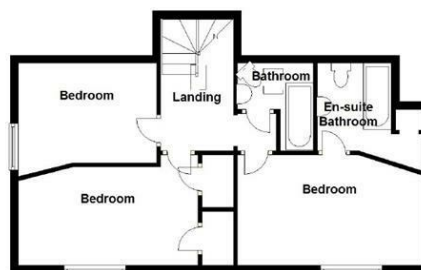




First Floor
Approx. 71.8 sq. metres (773.3 sq. feet)



Second Floor
Approx. 50.4 sq. metres (542.5 sq. feet)



Total area: approx. 231.4 sq. metres (2491.0 sq. feet)

LOCAL AUTHORITY

TENURE

COUNCIL TAX BAND

F

VIEWINGS

By prior appointment only

Energy Efficiency Rating		
	Current	Potential
Very energy efficient - lower running costs		
(92 plus) A		
(81-91) B		
(69-80) C		
(55-68) D		
(39-54) E		
(21-38) F		
(1-20) G		
Not energy efficient - higher running costs		
England & Wales		
		EU Directive 2002/91/EC

76

58

Agents Note: Whilst every care has been taken to prepare these particulars, they are for guidance purposes only. All measurements are approximate and are for general guidance purposes only and whilst every care has been taken to ensure their accuracy, they should not be relied upon and potential buyers/tenants are advised to recheck the measurements



OFFICE ADDRESS

Putterills Lettings
123 London Road
Knebworth
SG3 6EX

OFFICE DETAILS

01462 419333
lettings@putterills.co.uk
www.putterills.co.uk